

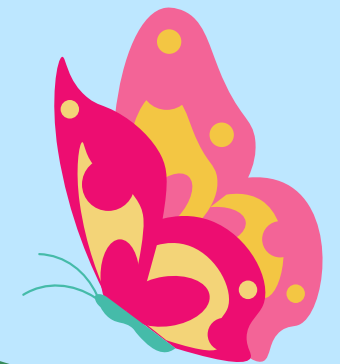
A stylized map with a heart icon on a location pin. The map is yellow with white lines representing roads and a blue border. A large orange location pin is centered on the map, with a white heart inside it. The text "WHAT ARE RELATED SERVICES?" is written in bold blue letters across the map.

WHAT ARE RELATED SERVICES?

Families with children eligible for special education services may also be eligible for related services. This guide will break down the various related services available and ways families can access them.

WHAT ARE RELATED SERVICES?

Related services include any services needed for children to fully benefit from special education. They are detailed in Sec 300.34 of the Individuals with Disabilities Education Act (IDEA). After evaluation, related services will be discussed and agreed upon in the IEP meeting. The IEP team will specify when the service will begin, how often it will be provided, the duration of sessions (if applicable), and where the service will be provided. Families may also choose to seek related services outside of the school system and IEP, which may be covered by insurance or out-of-pocket pay.





RELATED SERVICES

pg 1 of 3

Speech-Language Pathology

Includes identification, diagnosis, services, and counseling related to speech, language, and/or communicative impairments

Physical Therapy

Services that address a child's ability to participate in the educational environment, including posture, muscle strength, and movement.

Occupational Therapy

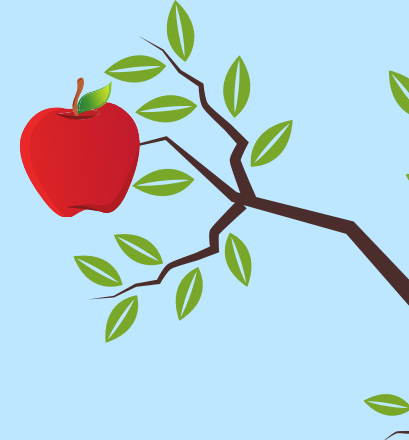
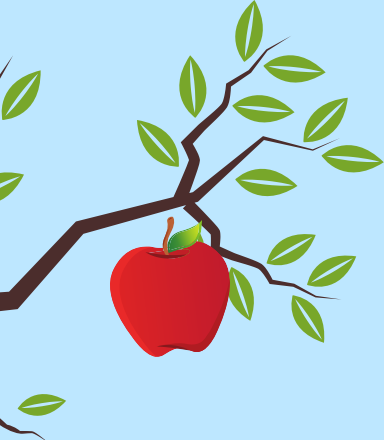
Services that help children to access their environment, including help with self-help skills, moving through and sitting in school, using the senses and muscles, using the muscles for things such as writing and cutting, life skills training, and psychosocial adaptation.

Audiology

Includes evaluation and services relating to hearing loss.

Interpreting Services

Services for children who are deaf or hard of hearing such as sign language transliteration and interpretation.



RELATED SERVICES

pg 2 of 3

Psychological Services

Includes giving and evaluating psychological testing, psychological counseling for children and parents, and positive behavior intervention services.

Social Work Services

Services for children who face challenges in their home or community, such as counseling, working with family on problems related to the child's living situation, and positive behavioral intervention strategies.

Counseling Services

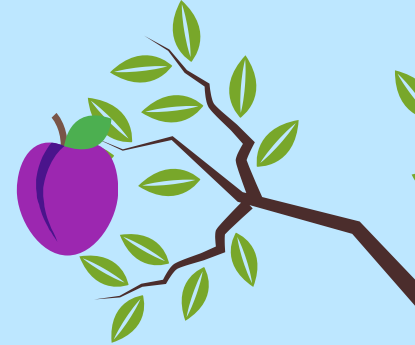
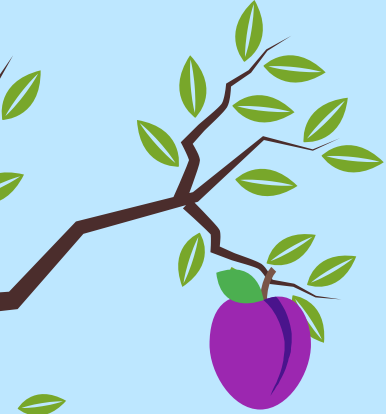
Can include counseling to help children with personal and social concerns, future planning regarding goals in school, developing a positive attitude toward learning, and recognizing academic strengths.

Health Services

Includes services for children requiring assistance from a nurse or other healthcare professional to participate in school, such as feeding, safety planning, management of medical equipment and skills training for school personnel.

Medical Services

These are only considered related services when a medical diagnosis from a licensed physician is needed for the child to access special education and related services.



RELATED SERVICES

pg 3 of 3

Parent Counseling and Training

Assists parents in understanding their child's development, disability, and helps them learn necessary skills to support their child in the IEP process.

Recreation

Services that teach children with disabilities leisure skills, which may include activities during the school day, in after-school programs, or in the community.

Orientation and Mobility

Services for children who are blind or visually impaired such as using information from the senses to navigate the environment, or use of a long cane or service animal.

Early Identification of Disabilities

This related service should be listed in the IEP when it is determined necessary for the child's disability to be identified in order to receive the right services. This may be relevant as some states may allow an IEP for children with a "developmental delay," where a need for services is identified without a more specific diagnosis.

Transportation

This can cover transportation to, from, or between schools, travel within the school, or any necessary special equipment such as adapted buses, lifts, or ramps.

Rehabilitation Counseling

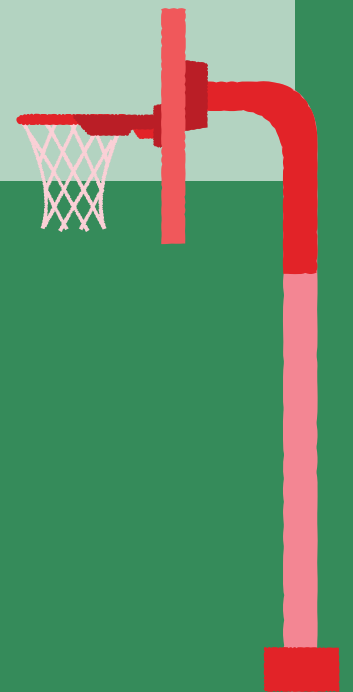
Refers to services that focus on employment preparation, independence, and integration into the community and workplaces.

HOW ARE THESE SERVICES PROVIDED?


Depending on the service type and your child's needs, related services may be provided within the classroom (push-in), outside of the classroom in school (pull-out) or in the community. Some related services, such as certain therapy types, may be delivered in sessions, while other services, such as nursing or interpreting services, may be delivered throughout the school day. The time frame and delivery for services, including the number of total hours, sessions, and settings should be agreed upon and written into the IEP.

WHAT IF MY CHILD NEEDS SOME OF THESE SERVICES, BUT DOES NOT QUALIFY FOR AN IEP?

Section 504 of the U.S. Rehabilitation Act of 1973 lays out guidelines for services for children who have an identified disability, but do not require specialized instruction, thus not requiring an IEP. Through a 504 plan, children with disabilities can receive accommodations necessary for them to access the educational environment. This can include services such as occupational therapy, physical therapy, behavioral support, changes to presentation of class materials, and others.




WHAT IF I IDENTIFY A NEED FOR A RELATED SERVICE AFTER MY CHILD'S IEP IS ALREADY ESTABLISHED?



After the IEP is established, families or school personnel on the team may request a revision to the IEP at any time.



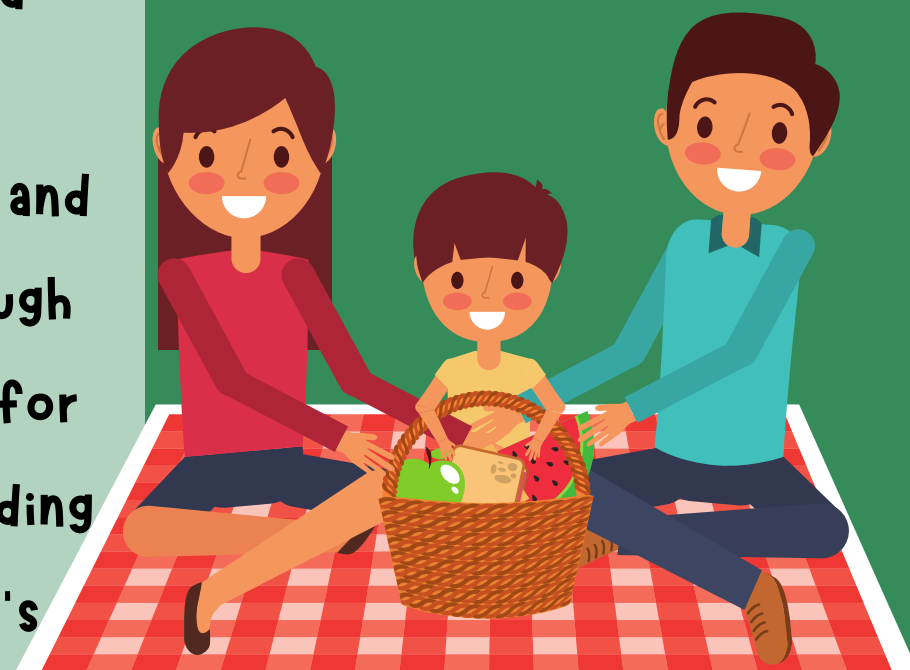
An evaluation relating to concerns may be completed.



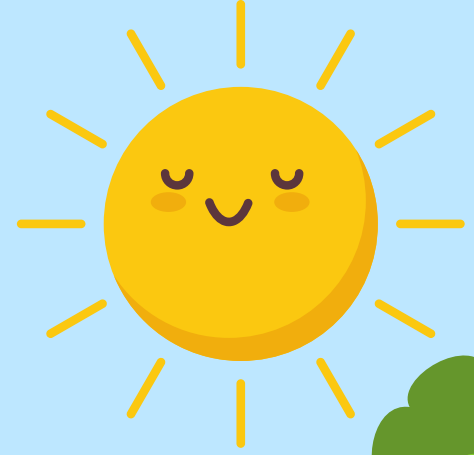
If the IEP team is in agreement, an amendment can be made to the IEP to add in necessary services.

HOW ELSE CAN MY FAMILY ACCESS THESE TYPES OF SERVICES?

Some families choose to seek additional services such as physical therapy, occupational therapy, speech-language therapy, and behavioral therapy through providers outside of the school system. Behavioral therapy that uses principles of applied behavior analysis (ABA) is evidence-based and commonly recommended by pediatricians and other professionals for children with autism and other disabilities, and is often offered through private agencies. These services can be paid for out-of-pocket or through insurance, depending on your family's insurance plan and your child's diagnosis. They can be accessed by contacting providers in your area.



RESOURCES



Overview of Related Services

The Law Regarding Related Services

About Section 504

